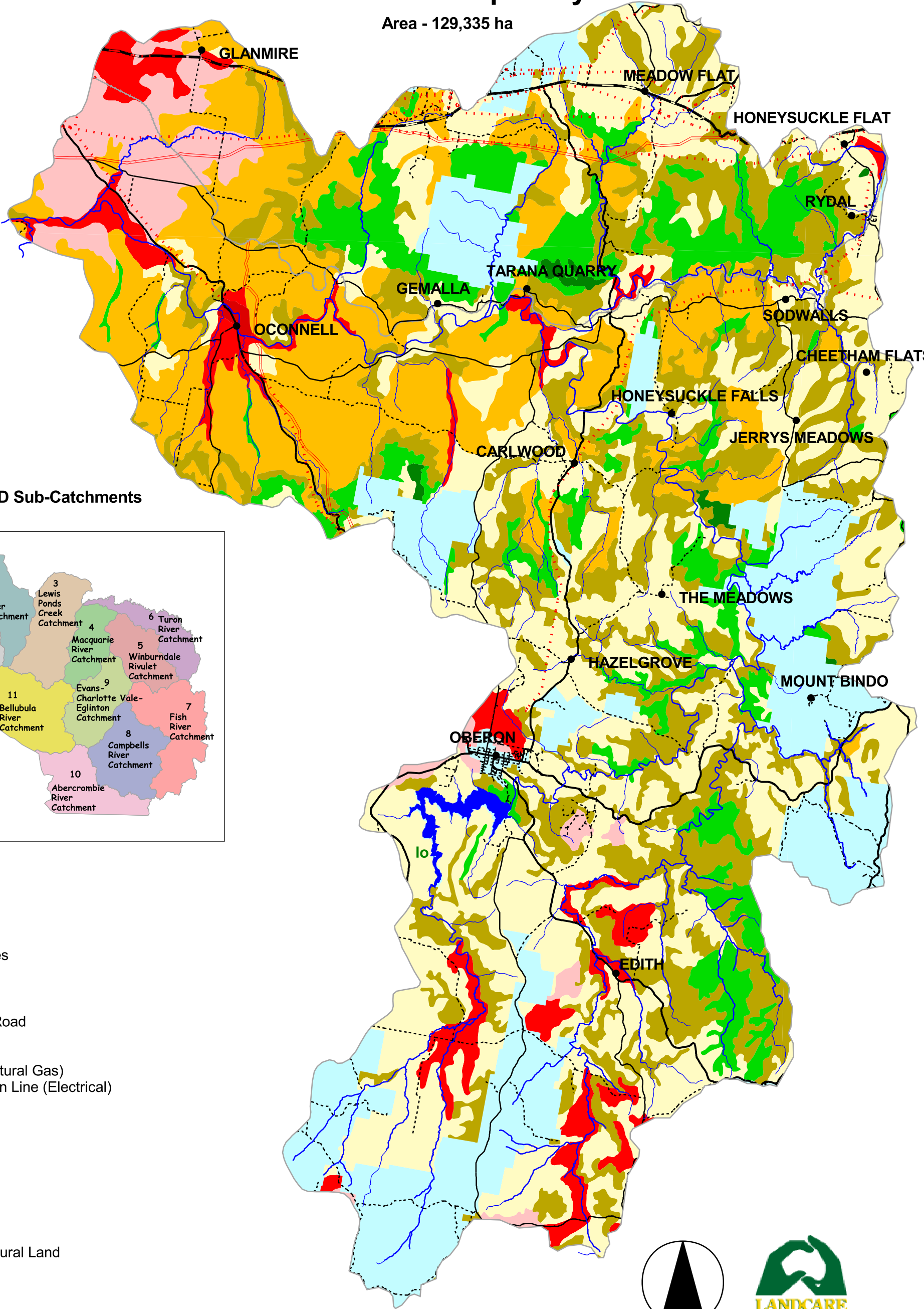
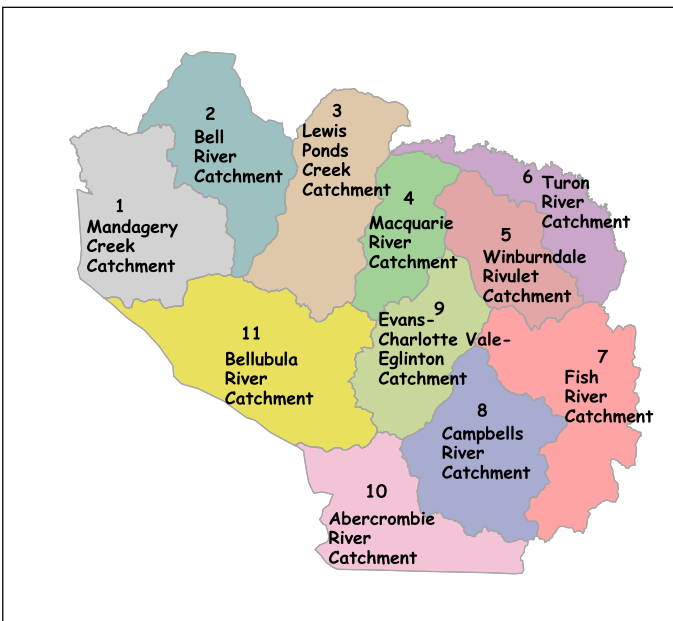


# Map sc7.7: Fish River Catchment Land Capability

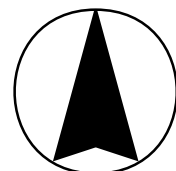
Area - 129,335 ha



## CTLD Sub-Catchments



- Localities
- ▭ Catchment
- ▬ Drainage
- ▬ Water Bodies
- Infrastructure
- ▬ Highway
- ▬ Main Road
- ▬ Connector Road
- ▬ Other Road
- ▬ Heavy Rail
- ▬ Pipeline (Natural Gas)
- ▬ Transmission Line (Electrical)
- Land Capability
- Class I
- Class II
- Class III
- Class IV
- Class V
- Class VI
- Class VII
- Class VIII
- Non Agricultural Land



### SOURCES

This map has been compiled from data supplied by the Department of Infrastructure, Planning & Natural Resources (formerly DLWC)

### DISCLAIMER

This map has been compiled from various sources and the Central Tablelands District Landcare Management Committee accept no responsibility for any injury, loss or damage arising from its use, or errors, or omissions therein.

