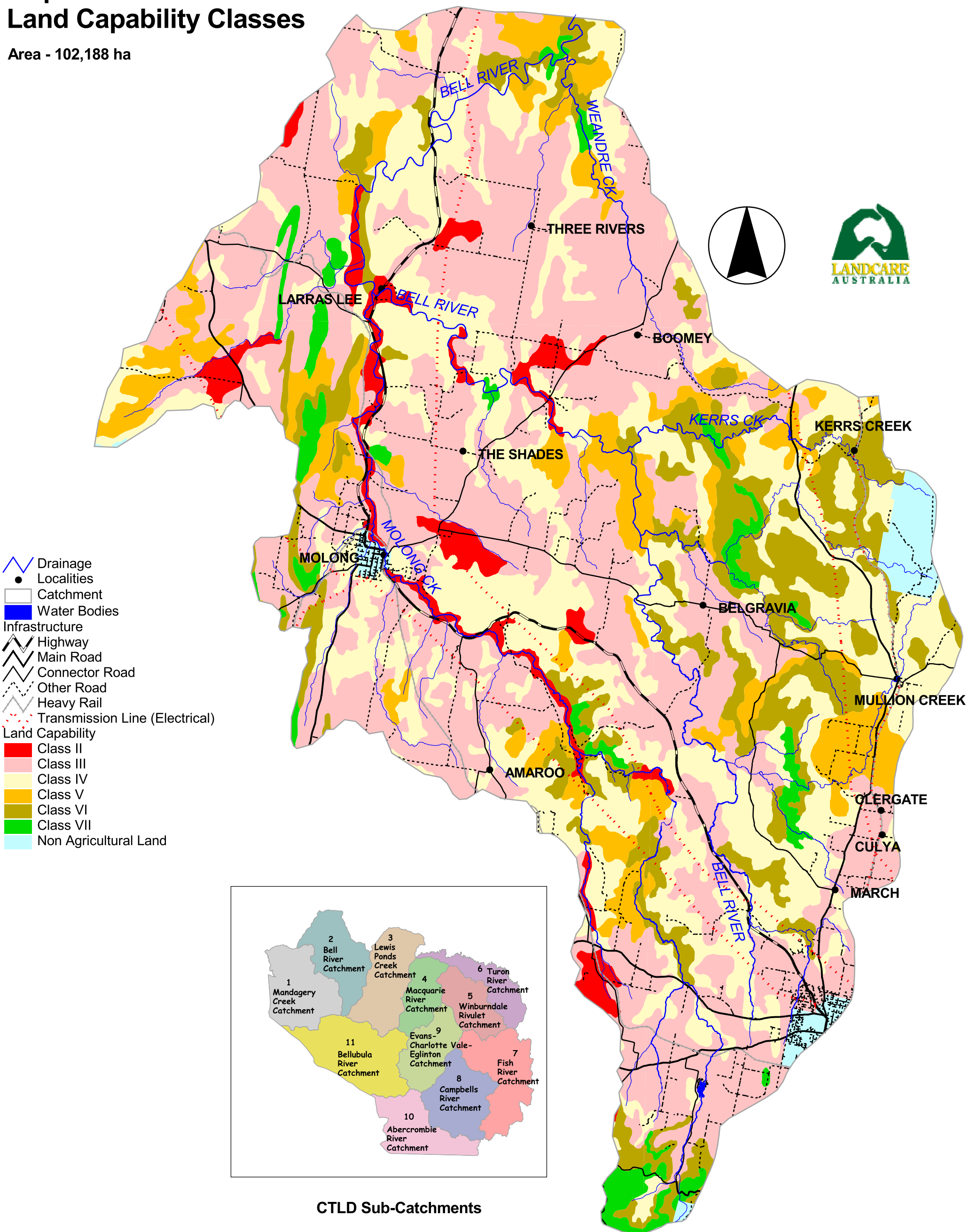


Map sc2.7: Bell River Catchment

Land Capability Classes

Area - 102,188 ha



SOURCES
 This map has been compiled from data supplied by the Department of Infrastructure, Planning & Natural Resources (formerly DLWC)

DISCLAIMER
 This map has been compiled from various sources and the Central Tablelands District Landcare Management Committee accept no responsibility for any injury, loss or damage arising from its use, or errors, or omissions therein.

