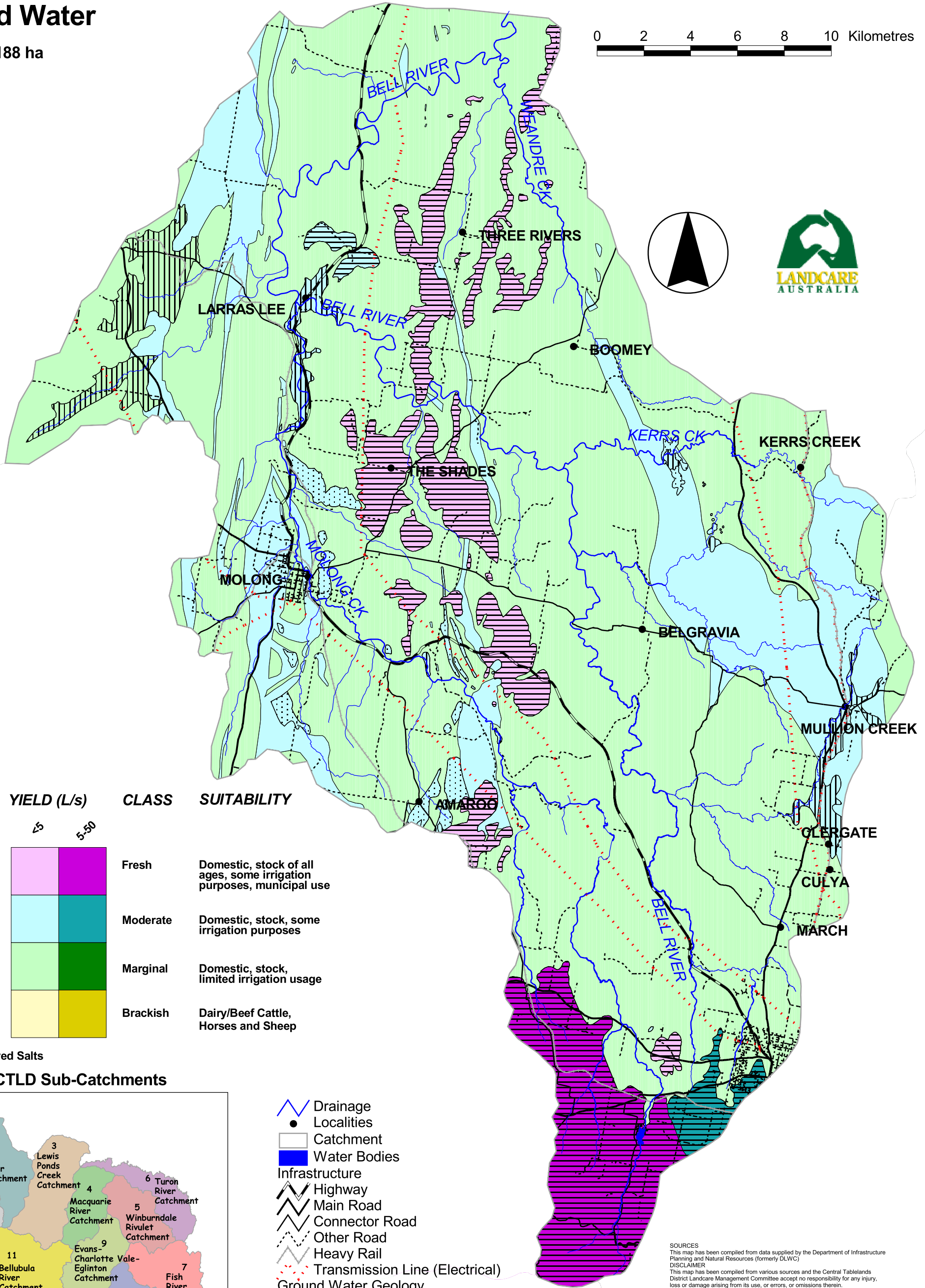
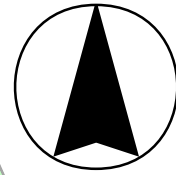


Map sc2.5: Bell River Catchment Ground Water

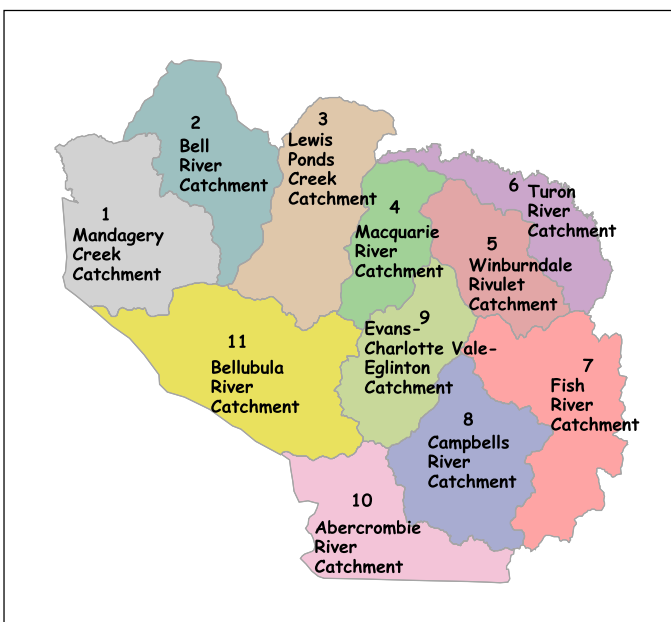
Area - 102,188 ha



TDS* (mg/L)	YIELD (L/s)		CLASS	SUITABILITY
	<5	5-50		
<500	Light Blue	Light Purple	Fresh	Domestic, stock of all ages, some irrigation purposes, municipal use
500-1500	Light Cyan	Teal	Moderate	Domestic, stock, some irrigation purposes
1501-3000	Light Green	Dark Green	Marginal	Domestic, stock, limited irrigation usage
3001-7000	Yellow	Orange	Brackish	Dairy/Beef Cattle, Horses and Sheep

* Total Dissolved Salts

CTLD Sub-Catchments



- Drainage
- Localities
- Catchment
- Water Bodies
- Infrastructure**
- Highway
- Main Road
- Connector Road
- Other Road
- Heavy Rail
- Transmission Line (Electrical)
- Ground Water Geology**
- Fractured Igneous
- Fractured Metasediment
- Fractured Volcanic
- Unconsolidated Alluvial

SOURCES
This map has been compiled from data supplied by the Department of Infrastructure Planning and Natural Resources (formerly DLWC)

DISCLAIMER
This map has been compiled from various sources and the Central Tablelands District Landcare Management Committee accept no responsibility for any injury, loss or damage arising from its use, or errors, or omissions therein.

NOTE: Groundwater availability maps are a visual representation of the expected and dominant groundwater resource for a specific area. The maps are compiled using groundwater data available on the DIPNR database system, published geological and topographic maps.

This map is a hydrogeological evaluation of all relevant data to determine expected quality and yield and should be used and interpreted with reference to the accompanying notes. It is a representation of groundwater availability and may not give a precise indication at any particular point. Differences can occur within a mapped classification zone which are related to local conditions and are not shown on a map at this scale.

Availability maps do not reflect current management priorities and intending users will need to consult local DIPNR offices to determine the potential for securing water access and use licences.