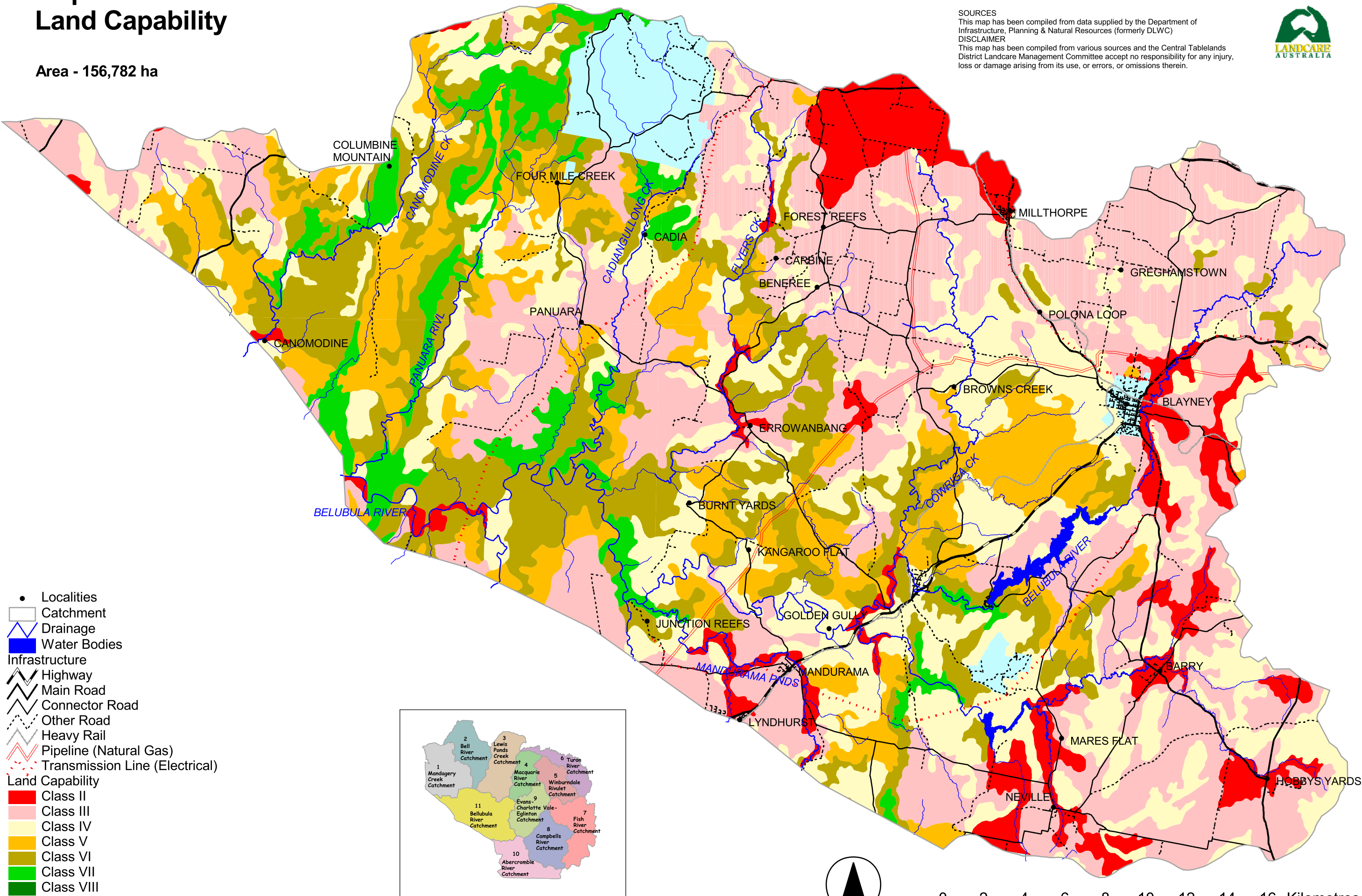


Map sc11.7: Belubula River Catchment

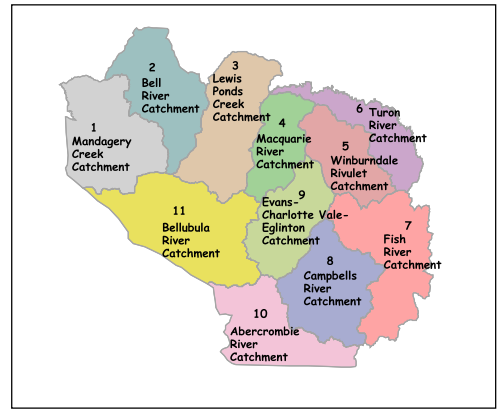
Land Capability

Area - 156,782 ha

SOURCES
 This map has been compiled from data supplied by the Department of Infrastructure, Planning & Natural Resources (formerly DLWC)
DISCLAIMER
 This map has been compiled from various sources and the Central Tablelands District Landcare Management Committee accept no responsibility for any injury, loss or damage arising from its use, or errors, or omissions therein.



- Localities
- ▭ Catchment
- ▬ Drainage
- ▬ Water Bodies
- Infrastructure**
- ▬ Highway
- ▬ Main Road
- ▬ Connector Road
- ▬ Other Road
- ▬ Heavy Rail
- ▬ Pipeline (Natural Gas)
- ▬ Transmission Line (Electrical)
- Land Capability**
- ▬ Class II
- ▬ Class III
- ▬ Class IV
- ▬ Class V
- ▬ Class VI
- ▬ Class VII
- ▬ Class VIII
- ▬ Non Agricultural Land



CTLD Sub-Catchments

