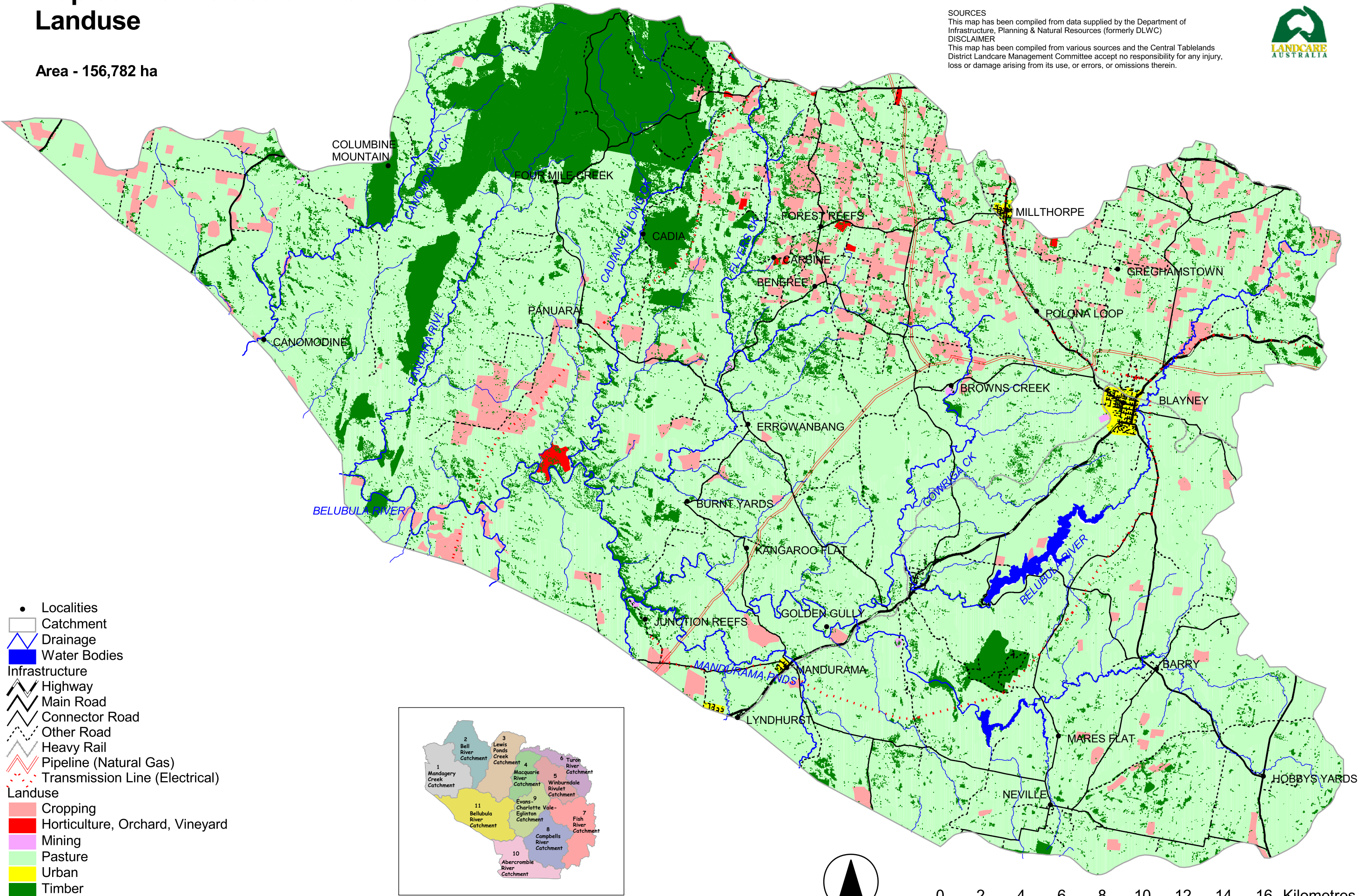


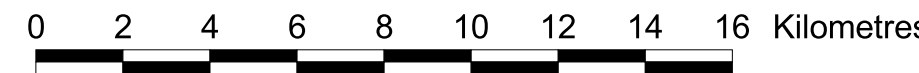
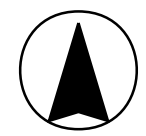
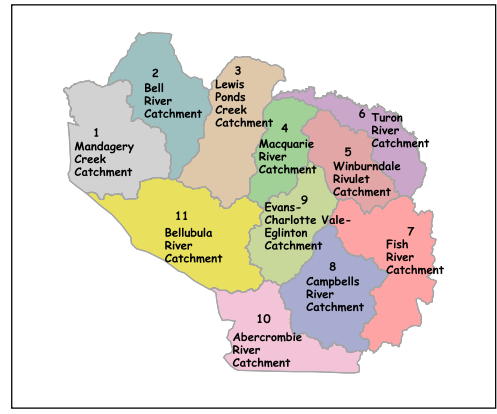
Map sc11.6: Belubula River Catchment Landuse

Area - 156,782 ha

SOURCES
 This map has been compiled from data supplied by the Department of Infrastructure, Planning & Natural Resources (formerly DLWC)
DISCLAIMER
 This map has been compiled from various sources and the Central Tablelands District Landcare Management Committee accept no responsibility for any injury, loss or damage arising from its use, or errors, or omissions therein.



- Localities
- ▭ Catchment
- ▬ Drainage
- ▬ Water Bodies
- Infrastructure**
- ▬ Highway
- ▬ Main Road
- ▬ Connector Road
- ▬ Other Road
- ▬ Heavy Rail
- ▬ Pipeline (Natural Gas)
- ▬ Transmission Line (Electrical)
- Landuse**
- ▭ Cropping
- ▭ Horticulture, Orchard, Vineyard
- ▭ Mining
- ▭ Pasture
- ▭ Urban
- ▭ Timber



CTL Sub-Catchments