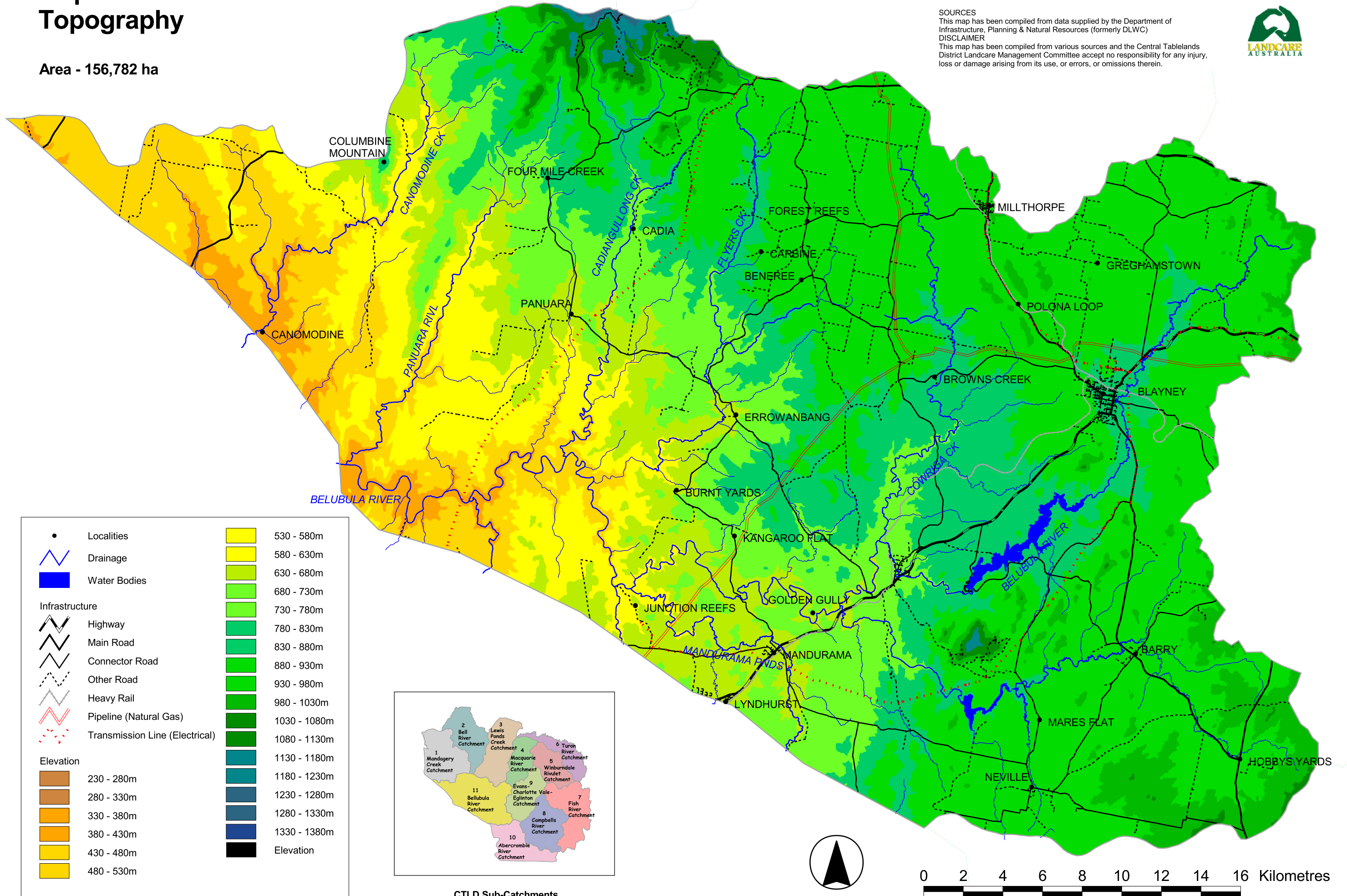


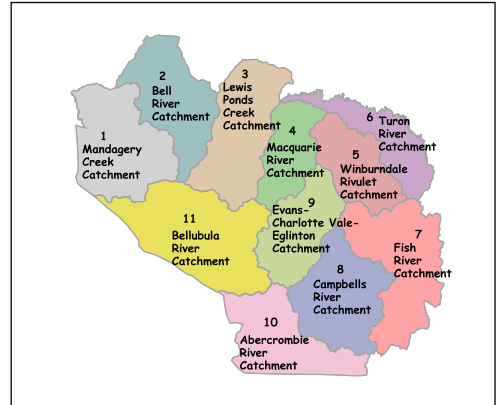
Map sc11.1: Belubula River Catchment Topography

Area - 156,782 ha

SOURCES
This map has been compiled from data supplied by the Department of Infrastructure, Planning & Natural Resources (formerly DLWC)
DISCLAIMER
This map has been compiled from various sources and the Central Tablelands District Landcare Management Committee accept no responsibility for any injury, loss or damage arising from its use, or errors, or omissions therein.



•	Localities		530 - 580m
	Drainage		580 - 630m
	Water Bodies		630 - 680m
Infrastructure			
	Highway		680 - 730m
	Main Road		730 - 780m
	Connector Road		780 - 830m
	Other Road		830 - 880m
	Heavy Rail		880 - 930m
	Pipeline (Natural Gas)		930 - 980m
	Transmission Line (Electrical)		980 - 1030m
Elevation			
	230 - 280m		1030 - 1080m
	280 - 330m		1080 - 1130m
	330 - 380m		1130 - 1180m
	380 - 430m		1180 - 1230m
	430 - 480m		1230 - 1280m
	480 - 530m		1280 - 1330m
			1330 - 1380m
			Elevation



CTLD Sub-Catchments

