



Central Tablelands
Regional
Landcare



STRATEGIC PLAN 2023-2027

Vision

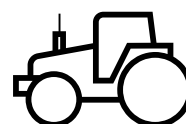
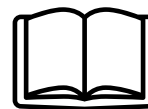
Independent. Reliable. Advocating for a sustainable future.

Mission

Empowering our Local Landcare networks, coordinators and volunteers to support, communicate, educate, and nurture sustainability across our environment, encompassing both urban, natural and agricultural landscapes

OUR PRIORITIES

- **Be Landcare's Voice in Central Tablelands:** Represent and advocate for our members' interests and needs in the region.
- **Secure and Manage Regional Funding:** Obtain and distribute regional funding fairly to expand Landcare activities and projects in Central Tablelands.
- **Enhance Communications:** Promote our regional communications to support Local Landcare coordinators and their communities.
- **Legacy and Succession:** Maintain Landcare's enduring presence in the region and plan for future leadership to continue our mission effectively.
- **Lead Regional Projects:** Develop and support impactful Landcare initiatives to benefit the environment and community.



OUR VALUES

- Local level action
- Environmental Stewardship
- Collaboration
- Future Focused
- Knowledgeable
- Reliability
- Inclusion
- Innovation
- Success



Central Tablelands Regional Landcare Network



Our Network recognises that Aboriginal people are the original landcarers of Australia, and we are committed to engaging with our local Aboriginal residents and communities.

ABOUT US

The Central Tablelands Regional Landcare Network (CTRLN) is located in central NSW and covers an area of approximately 31,365 km². We represent a dynamic collaboration of our five local networks: Watershed Landcare, Central Tablelands Local Landcare, Mid Lachlan Landcare, Little River Landcare Group, and the Lithgow Oberon Landcare Association.

The CTRLN places a strong emphasis on collaboration and partnership-building. We work closely with fellow Landcare and community groups, local farmers and landholders, government agencies and private industry within our region. This ensures that our initiatives are characterised by cooperation. Our commitment to collaborative engagement allows us to maximise the positive impact of our work and create sustainable outcomes for the wider community and our environment.

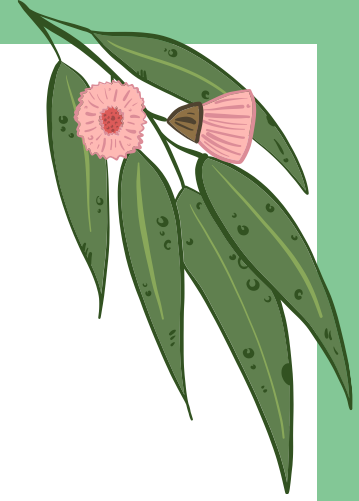
Our region is abundant in natural resources, including national parks, culturally significant sites and hosts a rich diversity of native flora and fauna. The Central Tablelands Regional Landcare Network falls predominantly within Wiradjuri Aboriginal country. Agriculturally, the region's diversity adds complexity to its natural resource management. Grazing is the most significant land use, followed by irrigated farming, broad-acre crops, and horticultural ventures, including fruit and vegetable cultivation and viticulture.



- CONTACT US -

www.ctregionallandcare.org





OUR PLAN ON A PAGE

Priority 1: Be the Voice of Landcare

- *Strategy 1: Representation and Advocacy*
 - Goals: Identify and address regional issues, establish a strong presence in forums, and advocate for change.
 - Measures: Addressed issues, active representation, successful advocacy, comprehensive report.

Priority 2: Secure & Manage Funding

- *Strategy 2: Funding Acquisition and Distribution*
 - Goals: Secure funding sources, ensure fair distribution, strengthen reporting.
 - Measures: Secured funding, transparent distribution, successful grants, robust monitoring.

Priority 3: Enhance Communications

- *Strategy 3: Effective Regional Communications*
 - Goals: Establish a communication plan, support coordinators, utilise communication channels.
 - Measures: Comprehensive plan, increased visibility, member engagement, effective collaboration.

Priority 4: Legacy & Succession

- *Strategy 4: Sustainable Leadership & Continuity*
 - Goals: Develop a succession plan, ensure continuity, train community groups.
 - Measures: Identified leaders, documented plan, smooth transition, knowledge transfer, community capacity.

Priority 5: Lead Regional Projects

- *Strategy 5: Impactful Initiatives*
 - Goals: Identify projects, secure funding, collaborate, support events.
 - Measures: Completed projects, effective collaboration, successful events, community engagement.

